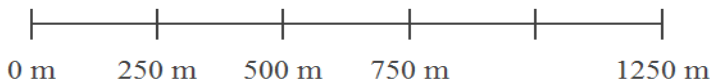
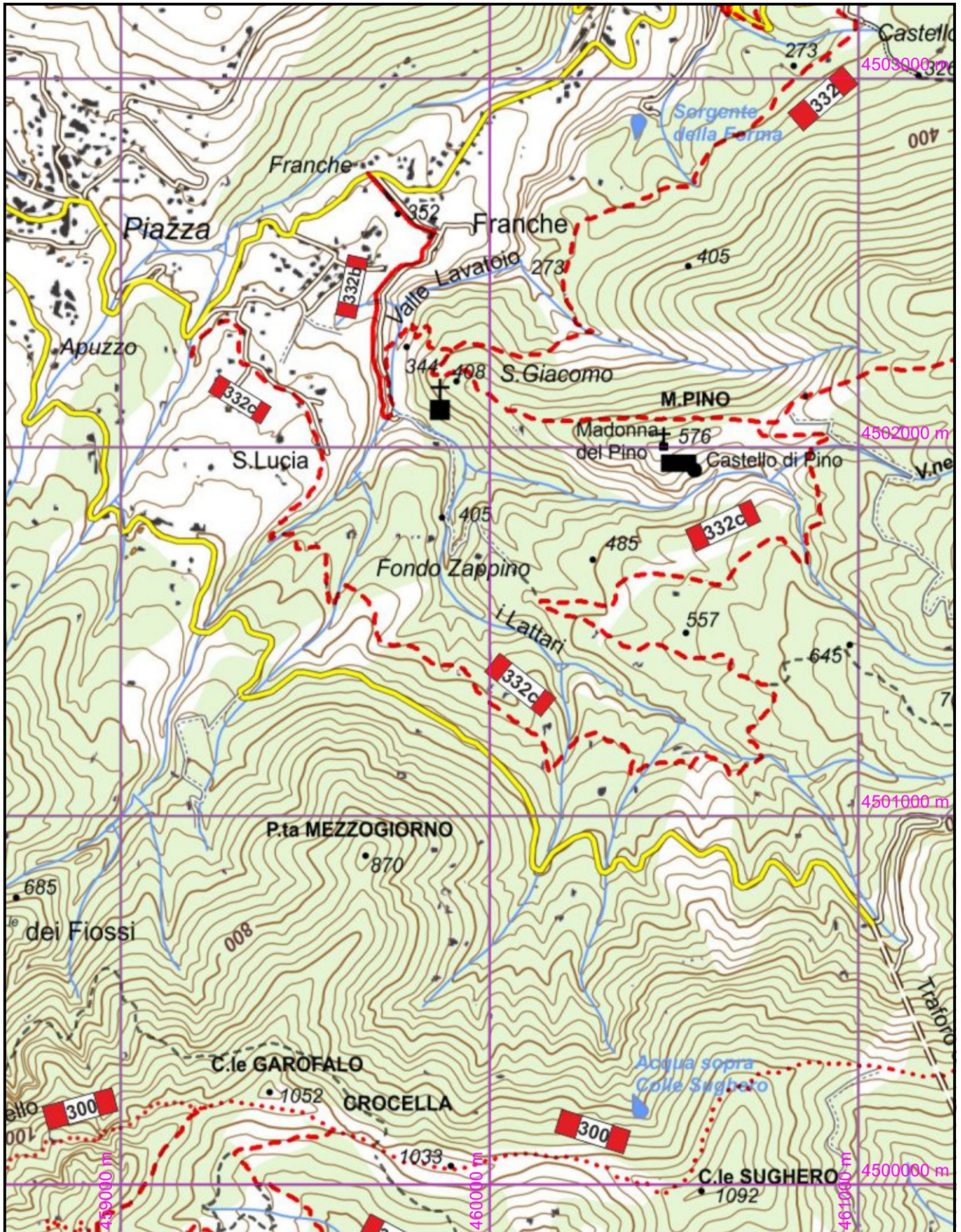


332c - Sentiero Zappino S.Lucia di Pimonte (393), Incrocio 332 Pino (576)
Dislivello in salita: 310 Dislivello in discesa: 150 Andata: 1,50 h Ritorno: 1,10 h
Difficoltà: **E** Lunghezza: 5500 m



1:15000

www.caimontilattari.it