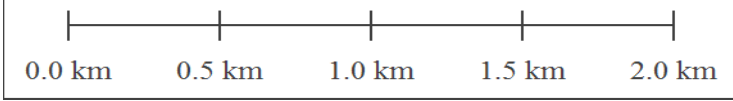
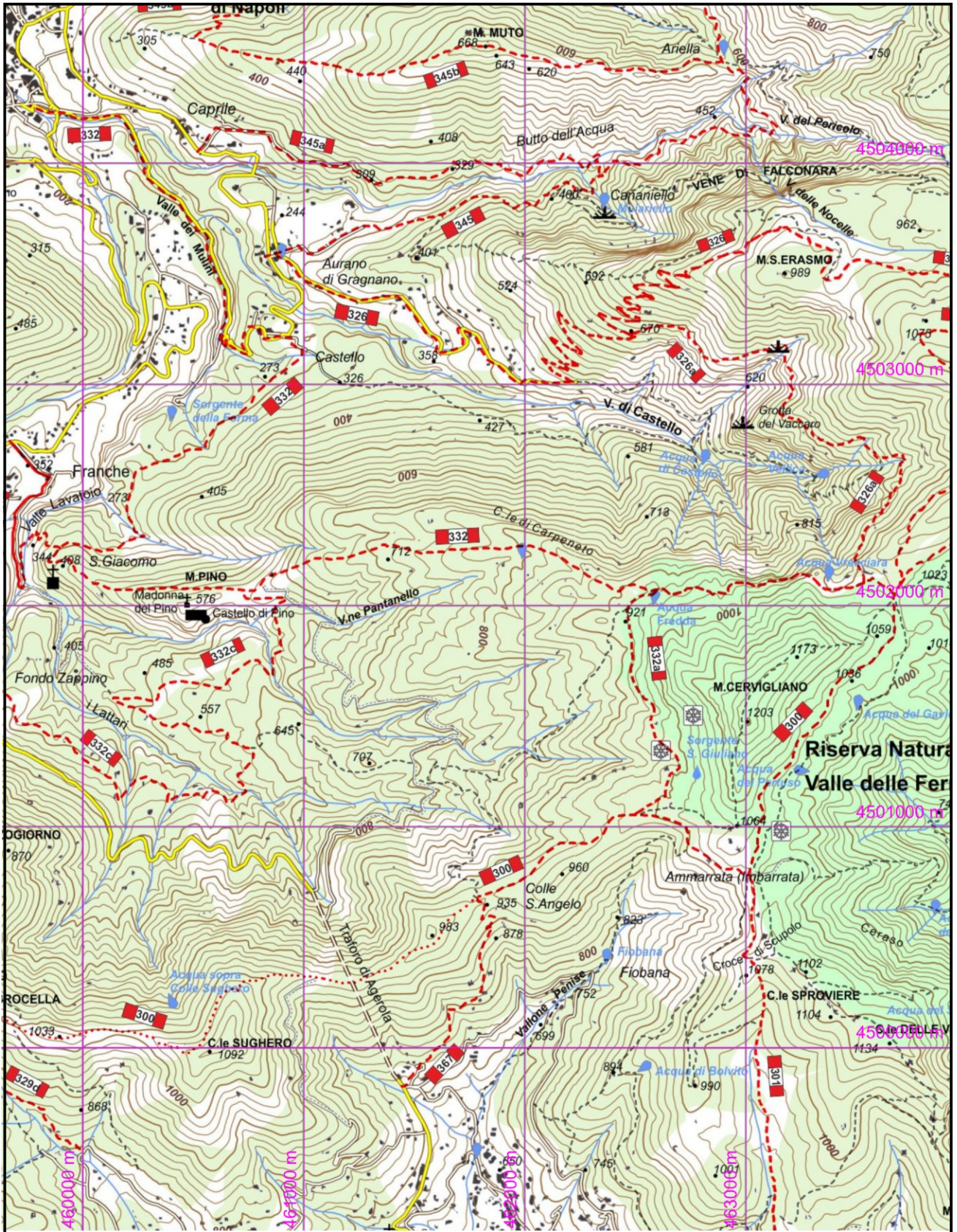
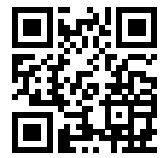


**332 - Sentiero dei Cavalieri di Amalfi** Piazza Aubry / Valle dei Mulini di Gragnano (125), Castello (257), M. Pino (576), Acqua Fredda (945), Acqua Vrecciara (950), Incrocio 300 M. Rotondo (1023)  
 Dislivello in salita: 850      Dislivello in discesa: 0      Andata: 3,30 h      Ritorno: 2,30 h  
 Difficoltà: **E**      Lunghezza: 8260 m



1:25000



[www.caimontilattari.it](http://www.caimontilattari.it)