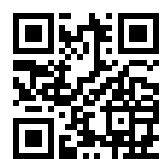
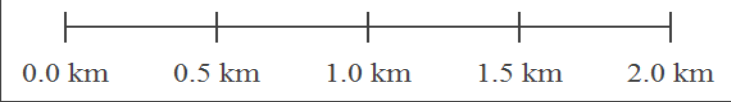
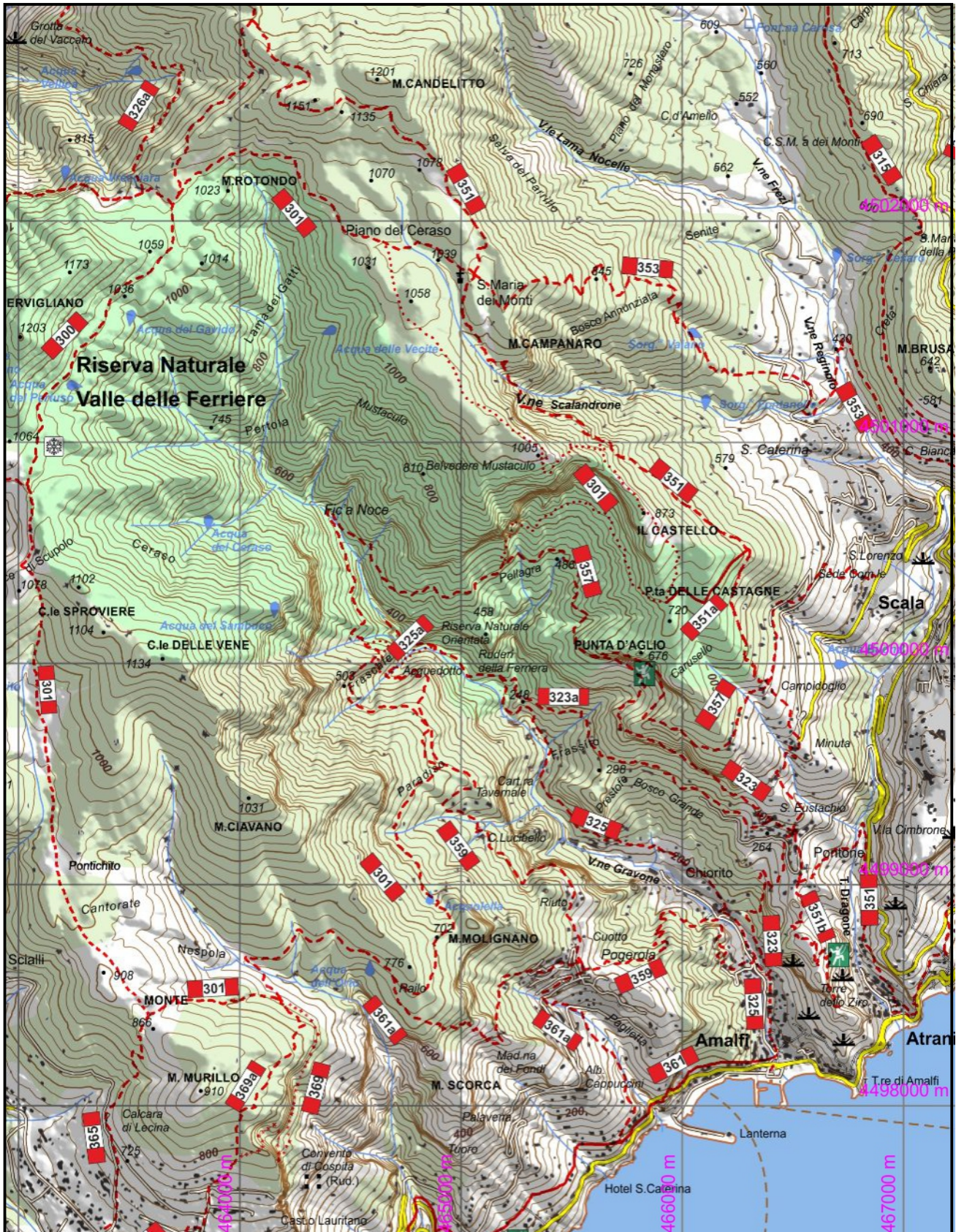


351a - Sentiero di Punta delle Castagne Incrocio 301 Punta delle Castagne (715), Incrocio 351 (695)
 Dislivello in salita: 5 Dislivello in discesa: 12 Andata: 0,10 h Ritorno: 0,10 h
 Difficoltà: **T** Lunghezza: 526 m



1:25000

www.caimontilattari.it