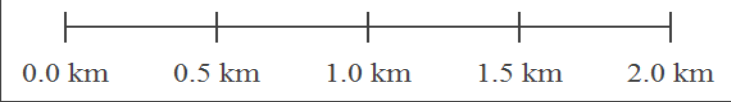
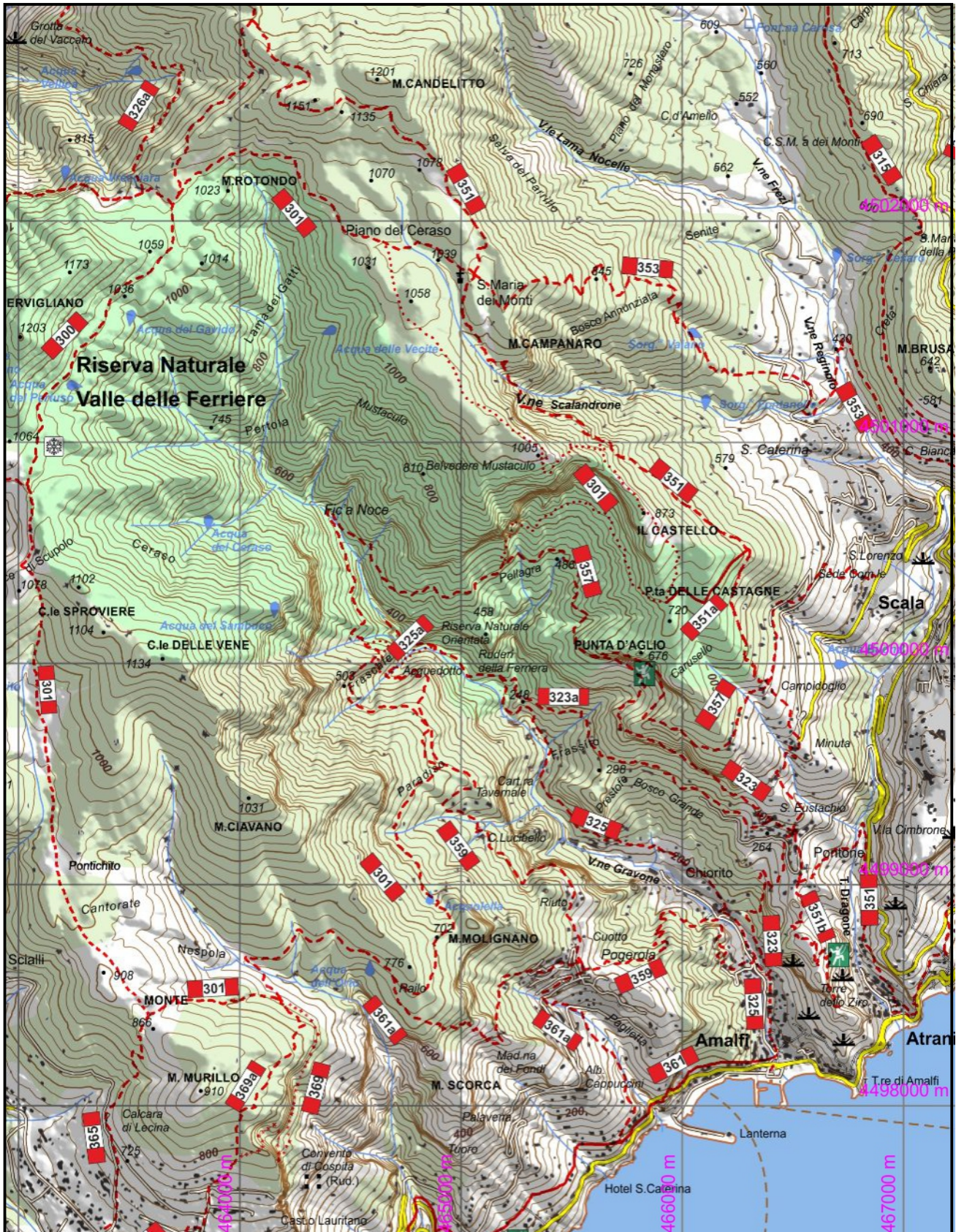


**351b - Torre dello Ziro** Incrocio 315 Pontone (240), Torre dello Ziro (135)  
 Dislivello in salita: 74      Dislivello in discesa: 119      Andata: 0,30 h      Ritorno: 0,30 h  
 Difficoltà: **E**      Lunghezza: 1100 m



1:25000

[www.caimontilattari.it](http://www.caimontilattari.it)