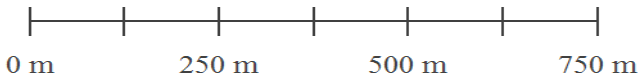
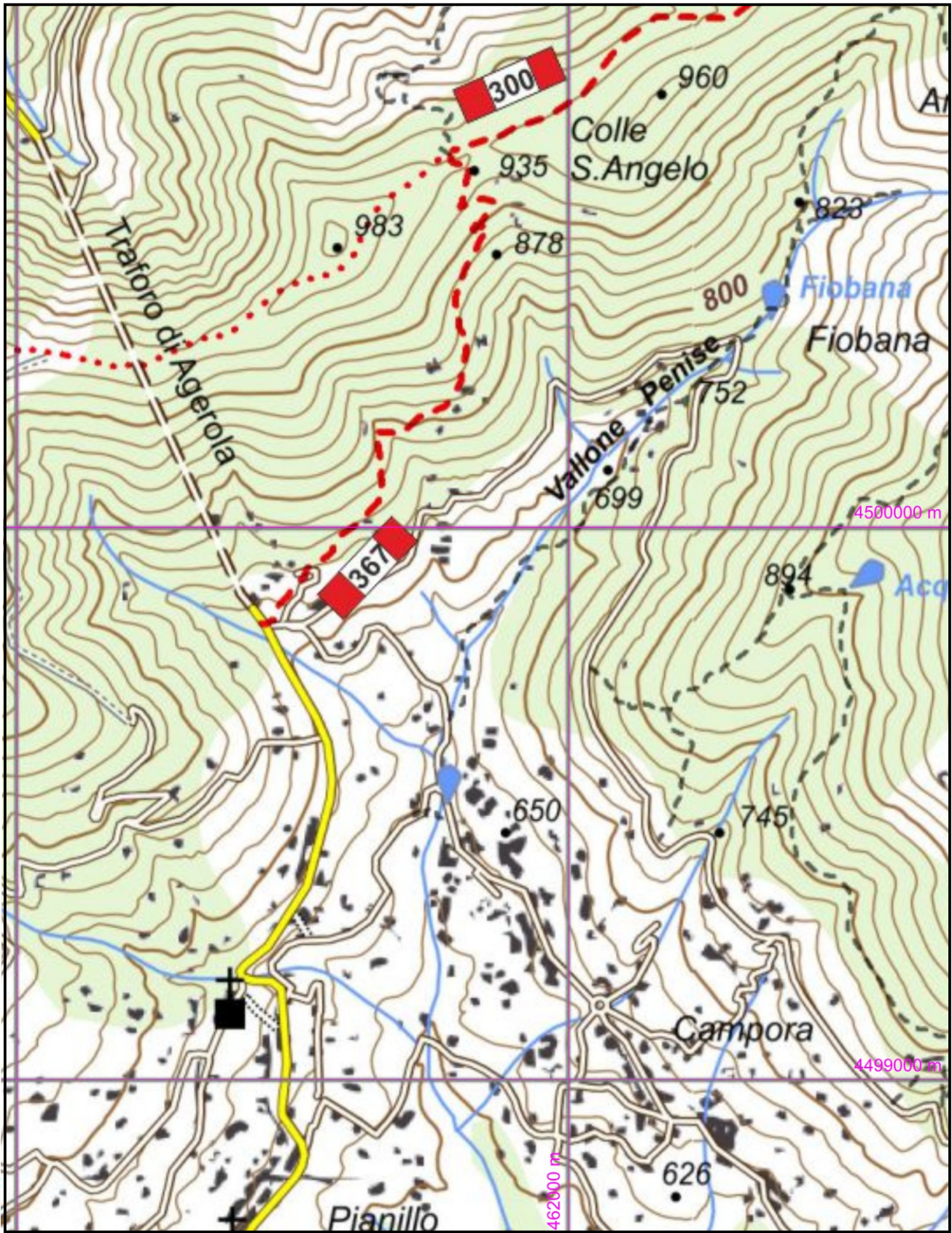


367 - Le Palommelle Agerola Traforo (705), Incrocio 300 Colle S. Angelo (935)
Dislivello in salita: 230 Dislivello in discesa: 0 Andata: 0,50 h Ritorno: 0,30 h
Difficoltà: **E** Lunghezza: 1250 m



1:10000

www.caimontilattari.it