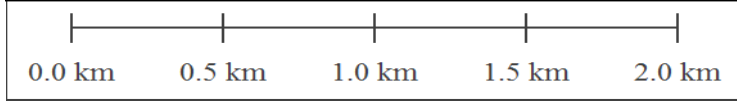
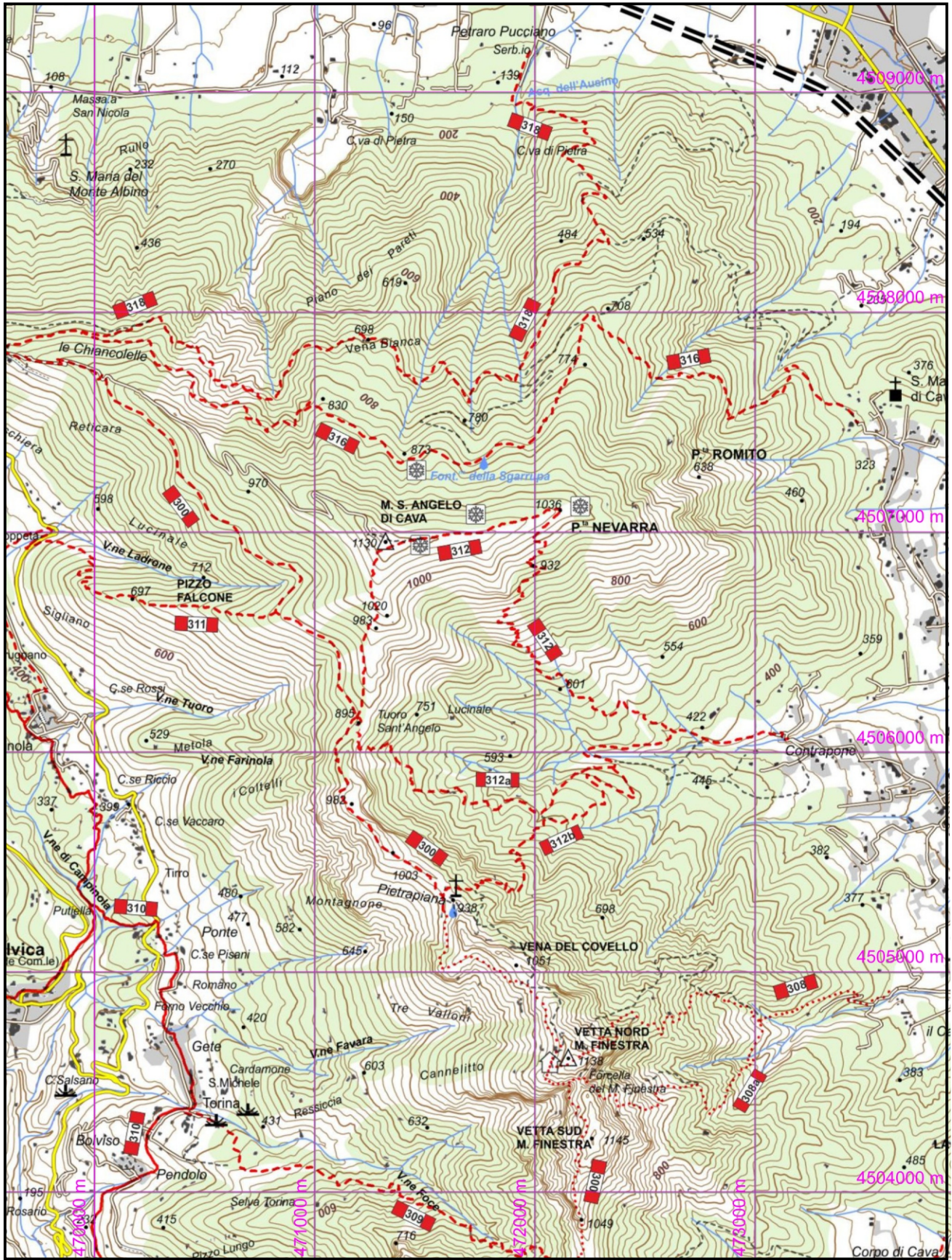


**316 - Da San Martino a Le Chiancolelle** San Martino (350), Fontana della Sgarrupa (878), Incrocio 318 (713), Incrocio 300 Le Chiancolelle (740)  
Dislivello in salita: 636      Dislivello in discesa: 214      Andata: 2,00 h      Ritorno: 1,45 h  
Difficoltà: **E**      Lunghezza: 5900 m



**1:25000**  
[www.aimontilattari.it](http://www.aimontilattari.it)