

340a - Sentiero di Orsano

S.Martino di Orsano di Lettere (475), Astaglio (570), Incrocio 340 (425)

Dislivello in salita: 120

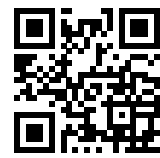
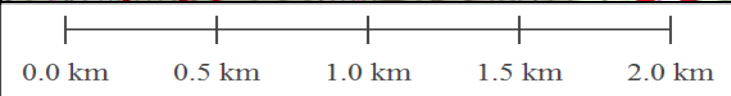
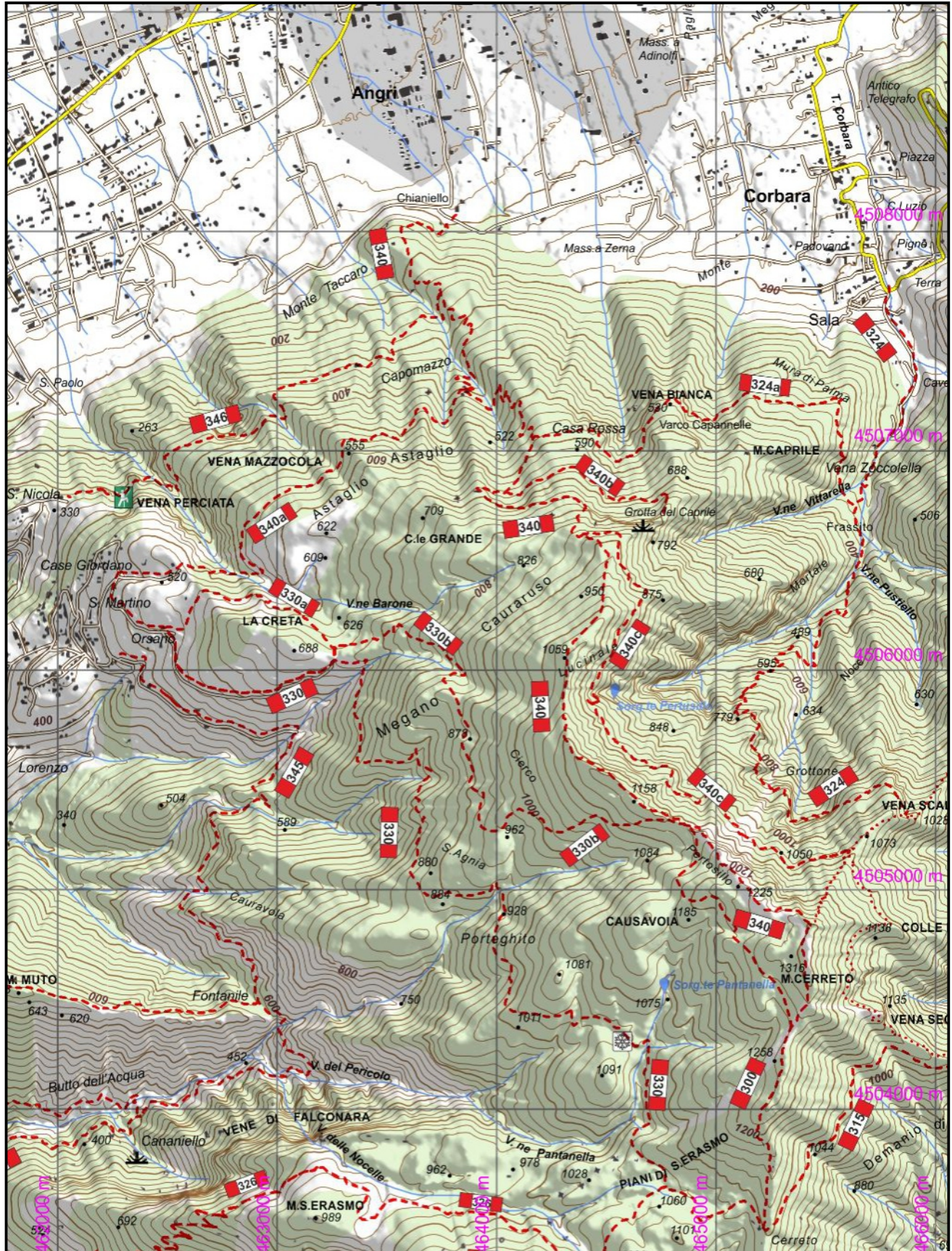
Dislivello in discesa: 175

Andata: 0,40 h

Ritorno: 0,50 h

Difficoltà: **E**

Lunghezza: 2410 m



1:25000

www.caimontilattari.it